

FRAMELESS[®]

IMMERSIVE ART EXPERIENCE



TRAVEL AND GROUPS GUIDE

4 multi-sensory galleries take art to a new dimension

WHERE ART BREAKS FREE

Experience 42 masterpieces from 29 of the world's most iconic artists, each reimagined beyond belief, through cutting-edge digital technology. FRAMELESS is a highly acclaimed and award-winning multi-sensory immersive art experience comprised of four spectacular galleries. With over 90 minutes of hypnotic visuals and a dazzling score created specifically for visitors, the use of technology to reimagine art at FRAMELESS will leave you speechless.

Set in the heart of London, FRAMELESS is situated just a few steps from Marble Arch and Oxford St.

WORKING WITH THE TRAVEL TRADE

Group Discounts

FRAMELESS offers group discounts for all bookings over 15, whilst offering net rates for travel trade organisations.

1 FOC ticket per 20 booked & Blue Badge Guides enter for free.

Schools and international students

We offer group discounts for self-guided groups of international students, bookable through travel@frameless.com.

Bookings

All bookings are managed direct through travel@frameless.com, with approved suppliers granted access to a bespoke booking platform with self-book functionality, as well as greater flexibility for cancellations and payment.

Private hire

FRAMELESS also boasts a multi-purpose event space available for private hire. For more information, please contact events@frameless.com.



BEYOND REALITY



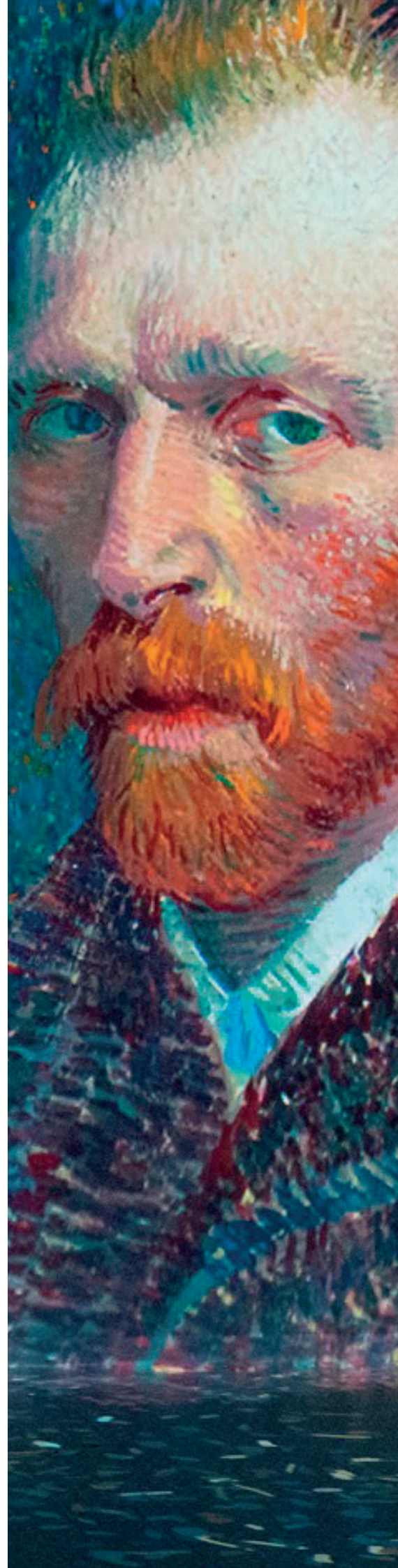
Surreal, otherworldly and dreamlike, the artworks in this gallery will allow you to travel beyond the boundaries of reality. Explore the fantastical worlds depicted by artists that have creatively pushed the boundaries of realism. Delivered using 5 surface wrap-around projection technology, these artists' masterpieces reflect infinitely in close-up detail. Artworks include *The Garden of Earthly Delights* by Hieronymus Bosch and *The Tree of Life* by Gustav Klimt, with additional artworks from Edvard Munch, Giuseppe Arcimboldo, Thomas Lowinsky, Henri Rousseau, Salvador Dalí and Max Ernst.

COLOUR IN MOTION

Interact with every brushstroke and splash of paint within each impressionist masterpiece on show in Colour in Motion.

Our advanced motion tracking technology will allow you to recreate art with your own movements.

Artworks include Waterlilies and Japanese Bridge by Claude Monet and Mont Saint-Michel by Paul Signac, with additional artworks from Vincent van Gogh, Georges Seurat, Berthe Morisot and Robert Delaunay.



THE WORLD AROUND US



Be swept away by 360-degree cityscapes and seascapes that completely envelop you in the beauty of our world, delivered using six surface projection technology. From crashing oceans to bustling cities, pastoral beauty to fiery volcanoes. Artworks include *The Grand Canal* by Canaletto, with additional artworks from Rembrandt, Claude Monet, J.M.W Turner, Katsushika Hokusai and Vincent van Gogh.

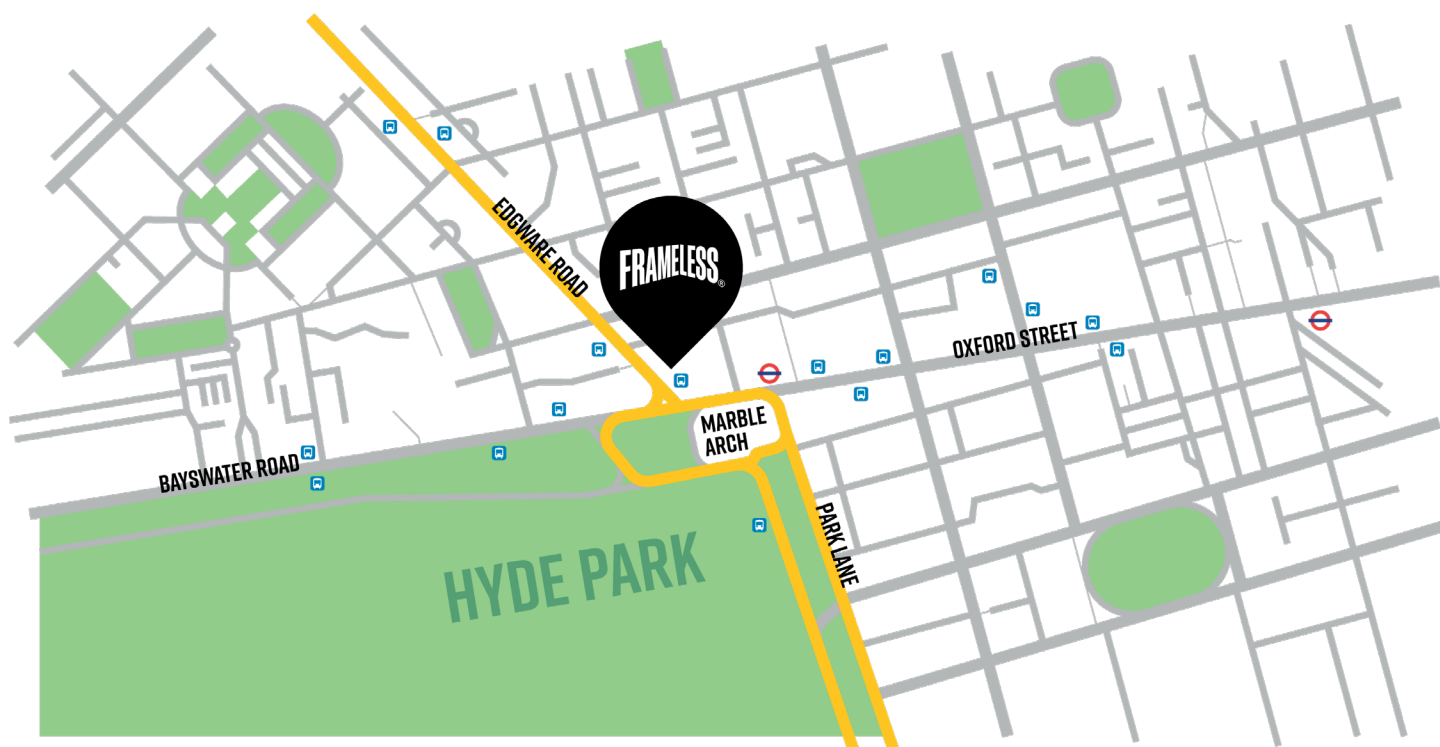
THE ART OF ABSTRACTION

Enter a digital maze and bask in colour and light, as abstract compositions move and dance; whilst shapes and forms bleed through fabric panels that create an ever-continuous journey of abstraction.

Artworks include *Yellow, Red, Blue* by Wassily Kandinsky and *Composition in Red, Yellow, Blue and Black* by Piet Mondrian, with additional artworks from Hilma af Klimt, Kazimir Malevich and Paul Klee.



PLAN YOUR VISIT



Opening times

Open 7 days a week

Monday to Friday: 11am – 6pm

Saturday & Sunday: 10am – 6pm

Extended opening hours apply during holiday periods.

How to find us

FRAMELESS

6 Marble Arch

London W1H 7AP

Languages

FRAMELESS is an audio-visual experience designed to be enjoyed by all. There is also translatable information available in 9 languages at the galleries. For information on BSL and AD services please visit our website or contact access@frameless.com.

Cloakroom

Cloakroom facilities are available.

Getting here

Tube: Marble Arch (1 min walk), Bond Street (8 mins walk), Edgware Road (12 mins walk), Marylebone (15 mins walk)

National Rail: Victoria (15 mins by bus), Paddington (10 mins by bus or tube), Marylebone (15 mins by bus or tube), Waterloo (16 mins by tube)

Bus: Marble Arch, serviced by the following buses: 2, 6, 7, 13, 23, 36, 74, 94, 98, 137

Coach: Coaches can drop off visitors at Bryanston Street (1min walk from FRAMELESS), and parking spaces for coaches are available at Park Lane.

Disabled Parking

The nearest disabled only parking is on Great Cumberland Place. There are also a number of parking bays on Bryanston Street which is the closest side street to FRAMELESS and only a short distance from the entrance.

All enquiries: travel@frameless.com